

**STAINLESS STEEL 316L
PRESS FIT FITTINGS
(M PROFILE)**

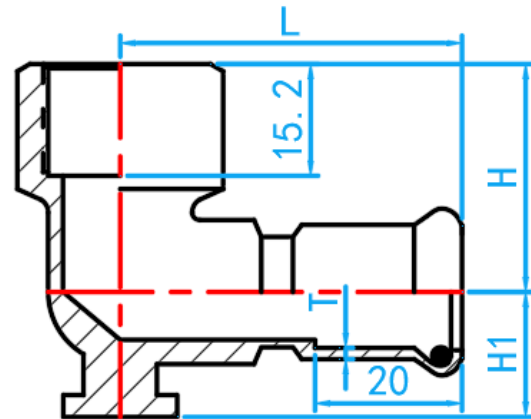
COMPLY WITH BSEN1254-2: 1998



A Product of the nPressGuard[®] Solution



WALL PLATE ELBOW



CROSS SECTIONAL VIEW

STANDARD SPECIFICATION

Working Pressure	16 Bar
Working Temperature	0 ~ 85°C
Applications	Hot and cold potable water system.

DIMENSIONS

SKU	SIZE (mm x inch)	L (mm)	H (mm)	H1 (mm)	T (mm)	WEIGHT (kg)	PCS/CTN
SS316LPFNFE015	15 × 1/2" BSP	48	26	15	1.5	0.089	150